

Line
Space Value Form Texture
Color
Shape

The Elements of Art

There are 7 basic elements of art.

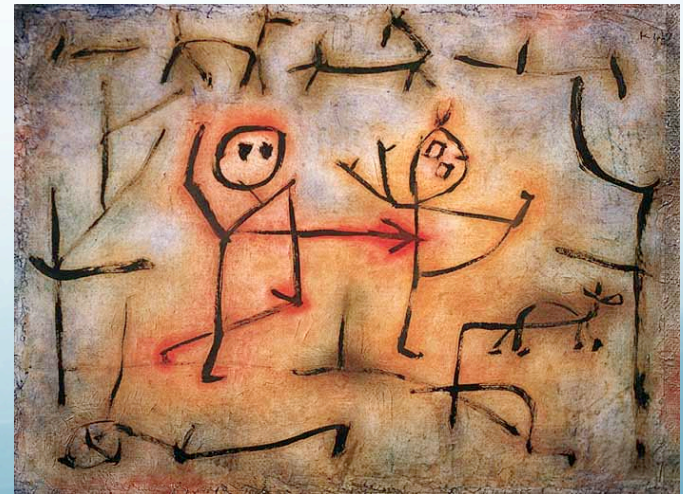
**The elements are the components used to create,
or build a work of art.**

Knowing the basics of these elements can help any artist to
create a well-balanced and beautiful work of art.

Line: The path of a moving point, a mark, or hatch mark, made on a surface.

“A LINE is a dot that goes for a walk.”

Paul Klee



“Everyone knows that a single
LINE may convey an emotion.”



Piet Mondrian

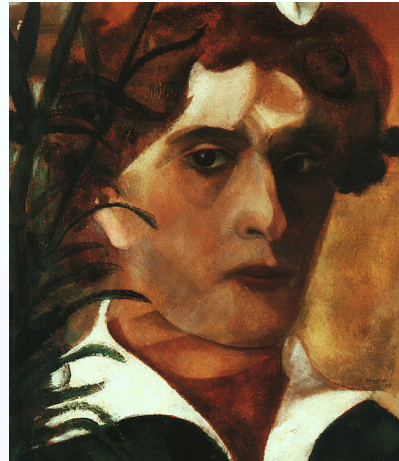
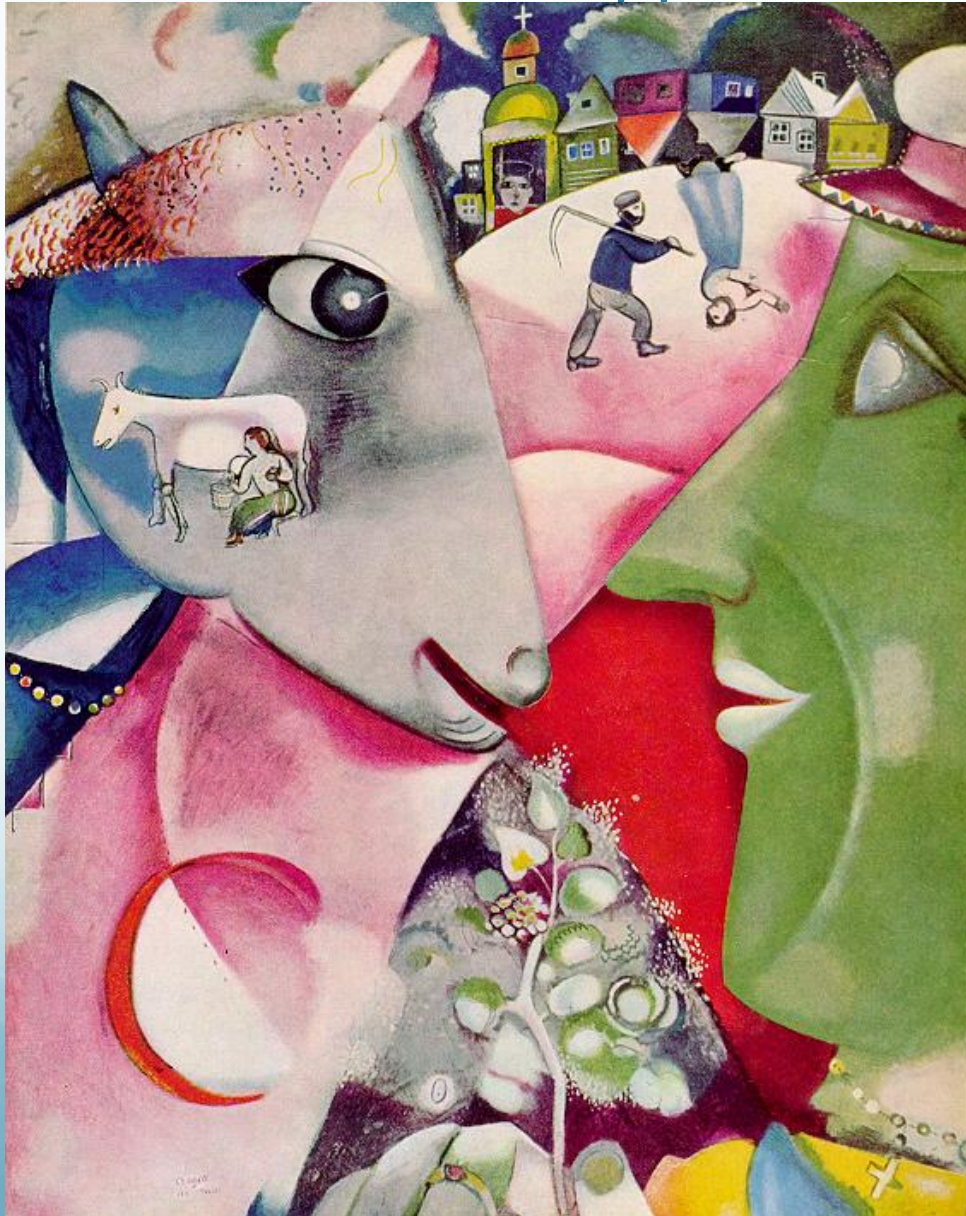


Color

Derived from reflected light, the sensation of color is aroused in the brain by response of the eyes to different wavelengths.

A color has 3 parts: *hue* (color name), *intensity* (strength, purity), and *value* (lightness and darkness).

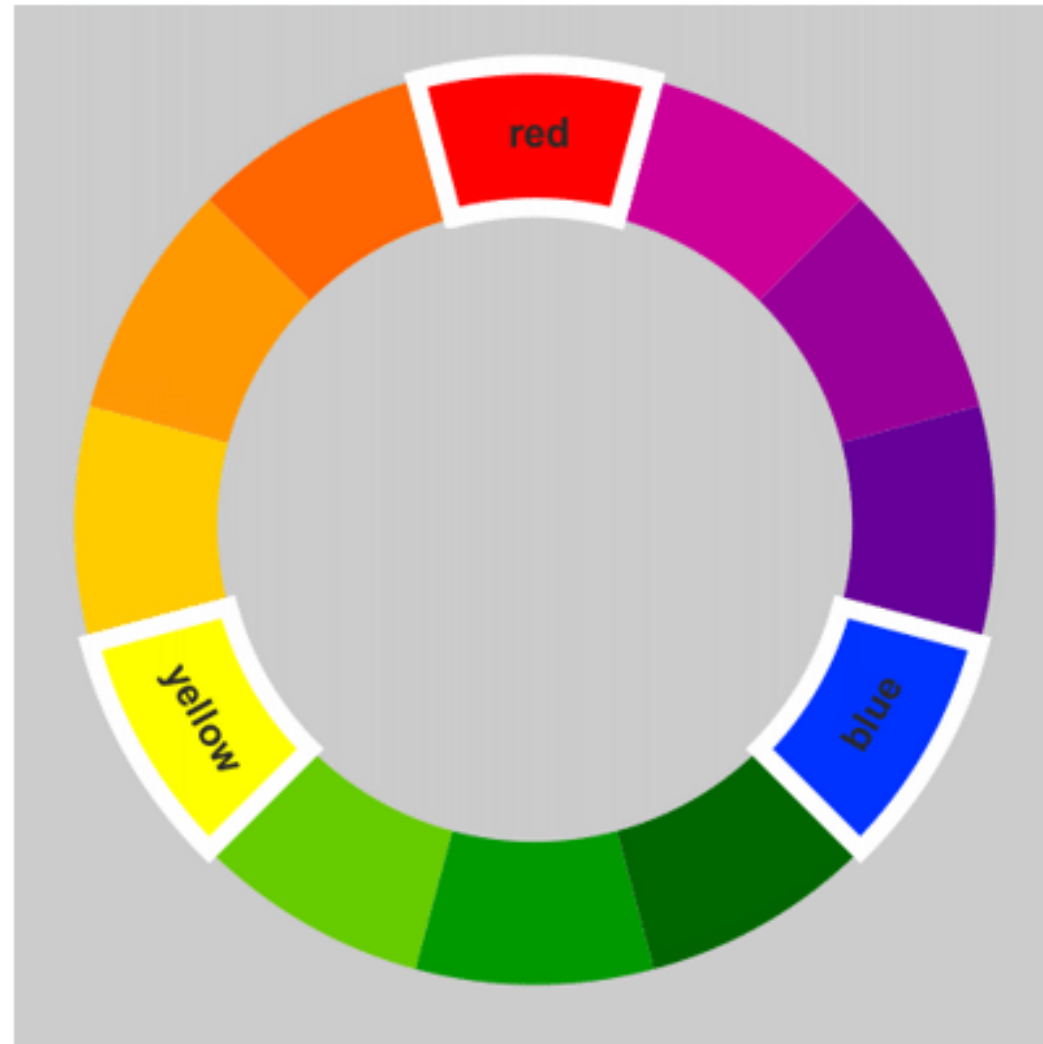
“All COLORS are the friends of their neighbors and the lovers of their opposites.”



Marc Chagall



PRIMARY COLORS



Red, Yellow and Blue are the primary colors.

These are the three basic colors that are used to mix all hues.

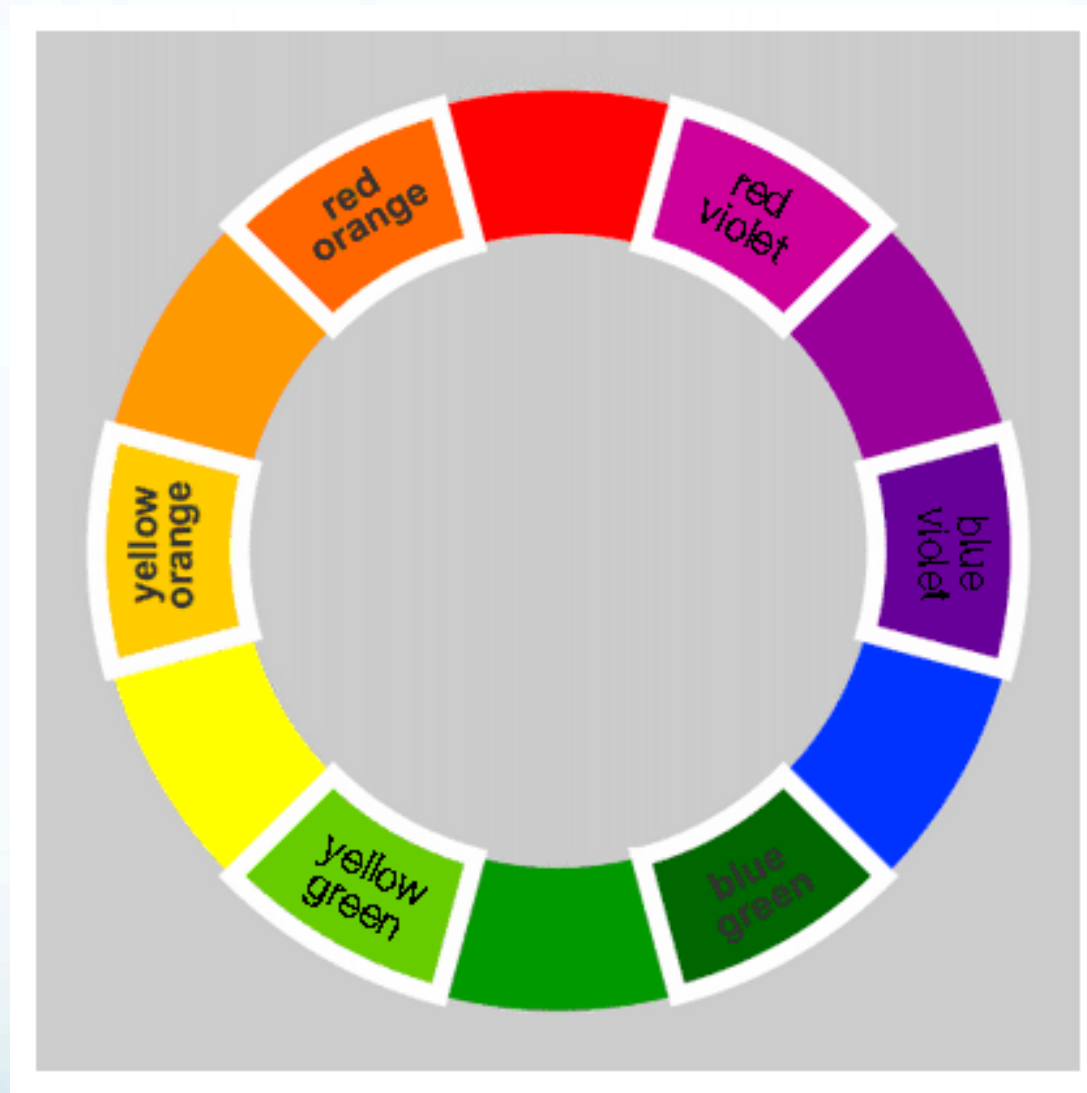
SECONDARY COLORS



Orange, Green and Violet are the secondary colors.

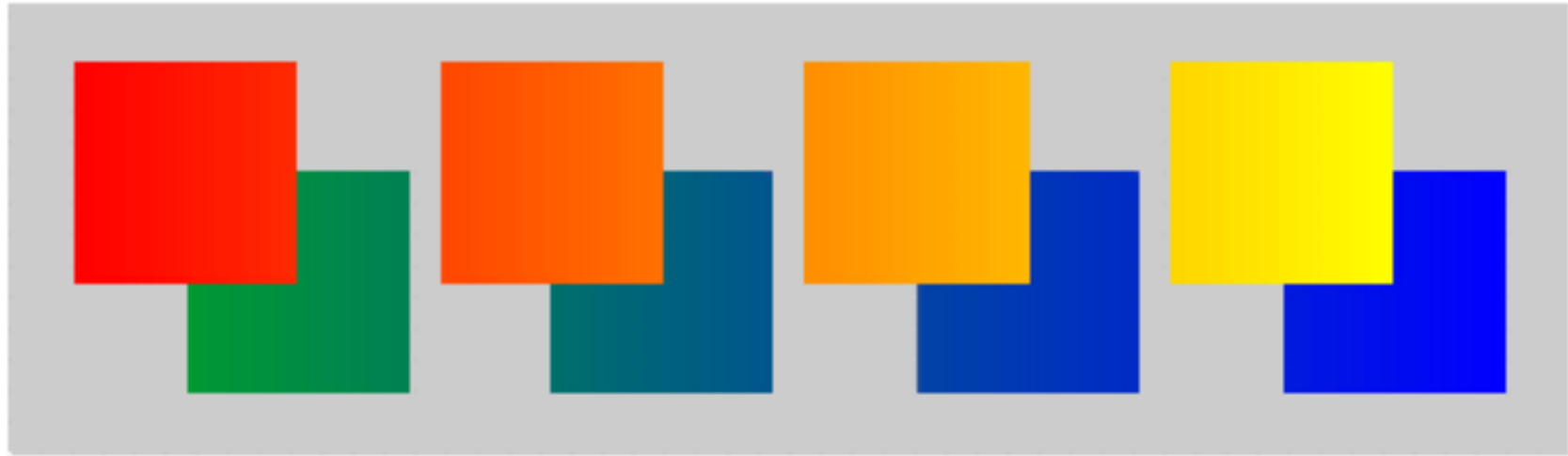
They are achieved by mixing two primary colors together.

TERTIARY COLORS



Tertiary colors are more subtle hues which are achieved by mixing a primary and a secondary color that are adjacent on the color wheel.

WARM AND COOL COLORS



Warm colors are said to be visually and emotionally exciting, while cool colors have a more calming effect.

The red / yellow side of the color wheel is said to be warm, similar to the colors of fire.

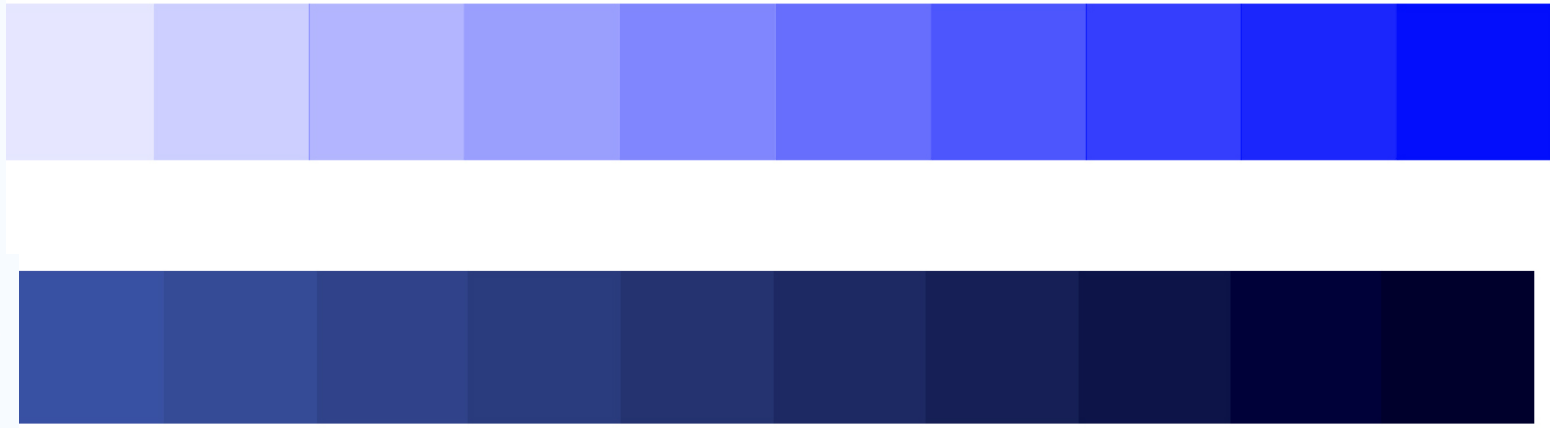
The green / blue side of the color wheel is said to be cool, similar to the colors of ice.

VALUE “If I could have had my own way,
I would have confined myself
to black and white.”

Edgar Degas



VALUE



This is an example of a value scale

Changes of a base color, and includes light, medium and dark areas. Value is determined by how much light a surface reflects or absorbs.

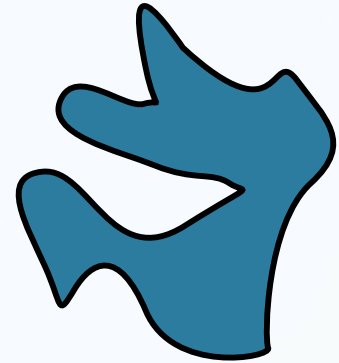
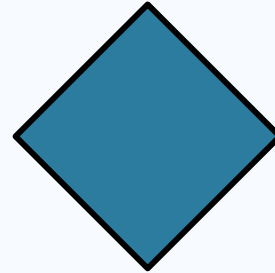
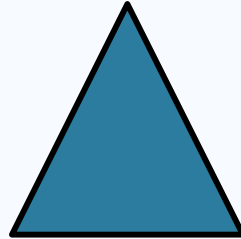
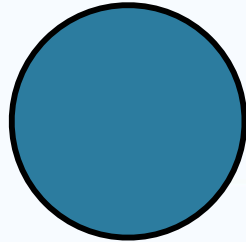
SHAPE

“When the subject is strong,
simplicity is the only way to treat it.”
-Jacob Lawrence

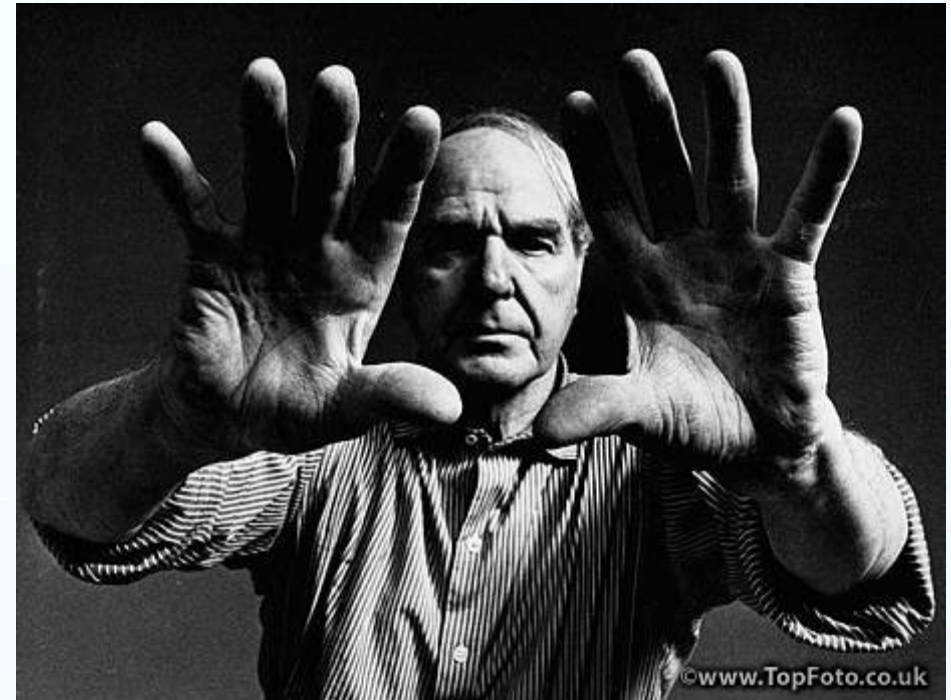


Shape

2D: The area enclosed by an outline



FORM

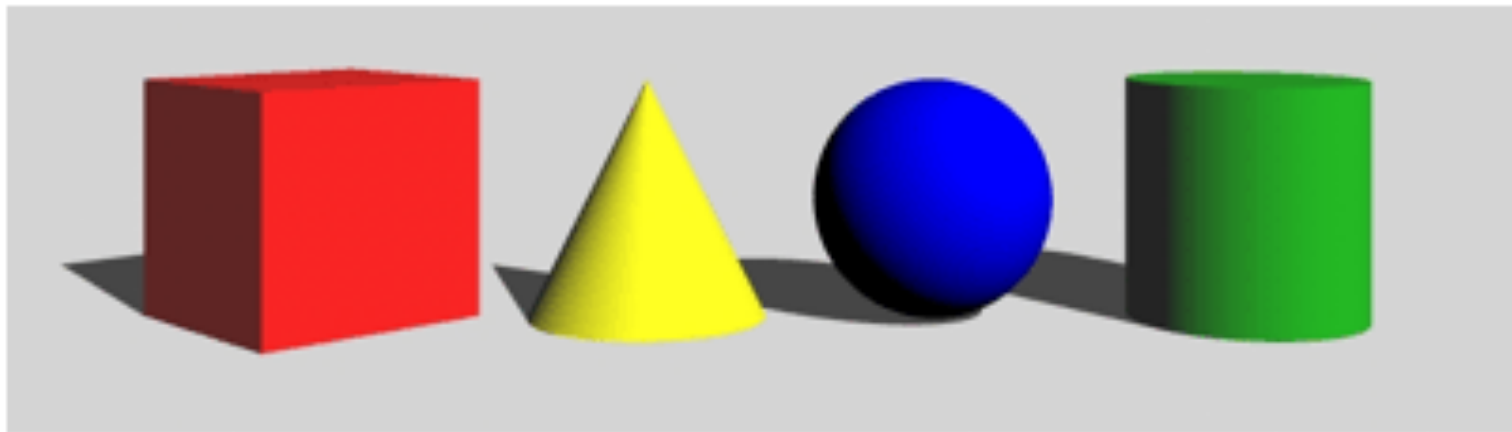


“There is no retirement for an artist, it’s your way of life,
there is no end to it.”

-Henry Moore, Sculptor

Form

3D: height, width and depth



TEXTURE

“I decided that since I can’t paint every single hair, I would use pattern to make the animals more interesting...I have to use color, value and texture to get the effects I’m after.” Anne Embree



Texture

The feel, appearance, or consistency of a surface or a substance, the tactile quality of the surface of a work of art.

SPACE

“There isn’t a landscape that doesn’t possess at least some interest-although sometimes more or less hidden. When a painter discovers this hidden treasure other people immediately exclaim its beauty.” Pierre Auguste Renoir



Space

The creation of visual perspective, and the illusion of depth; the distance around, between, above, below, and within an object or group of objects.